

Special points of interest:

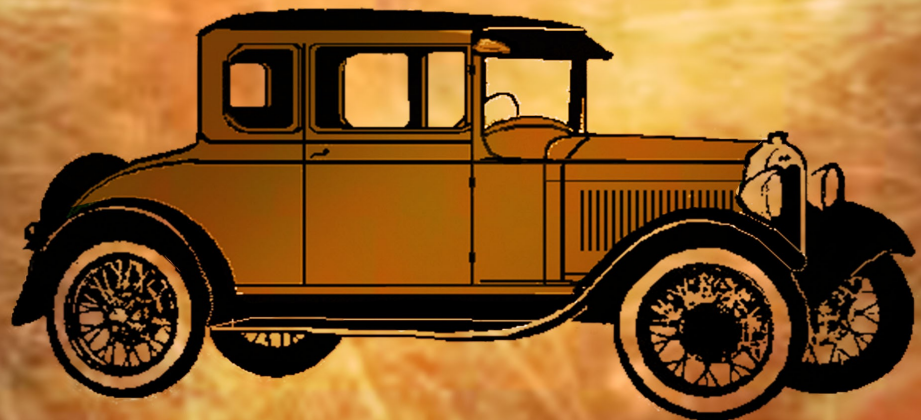
- Complete the International Model A Ford Day registration early
- Potluck prior to the August General Meeting

Inside this issue:

Technical Seminar	2
Tours & Activities Calendar/Swap Meets	3
International Model A Ford Day Regis- tration Info	4
Board Member Contact Info/ Ronald McDonald House	5
Historian's Corner	6
Technical Article	7
Car Barn Specials	8

We may be old cars,
but we can still
draw a crowd

INTERNATIONAL
MODEL A
FORD DAY



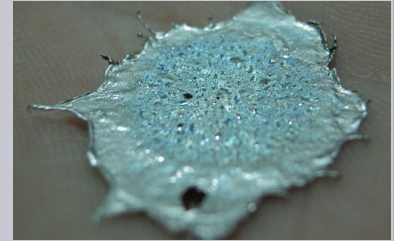
Mason Regional Park
September 13, 2014



President's Message

No message from the President this month. Enjoy your holiday.

*8am August 23rd
Lead Free Solder
Technical Seminar
Location: Pete and Irish Cruz's
2715 E Brookside Ave,
Orange, 92867
Coffee and doughnuts will be served*



Join us for good food and company

Fourth Thursday
Breakfast Bunch
August 28 8:30 am

Jagerhaus German Restaurant
2525 E Ball Rd
Anaheim 92805
(714) 520-9500

Info: Terry Collings
714 970-7194



Election Committee
We are still looking for someone
to take over the Election Com-
mittee. Want to know what is
involved? Just ask Kathie McCall!

Deadline for submissions for the next
Distributor is
August 25, 2014
Submit all articles and ads to
tismith@cookseylaw.com
or mail to P.O. Box 10595
Santa Ana, CA 92711

Upcoming Tours and Activities Calendar



Aug 2 (Sat) First Saturday Breakfast BS Session ~ 8AM at The Katella Grill, 1325 W Katella Ave, Orange

Aug 10 (Sun) Wounded Warrior Car Show, 9AM-3PM at Wyo Tech, Long Beach



Aug 14 (Thu) We have our Potluck prior to the August General Meeting. See additional info at end of calendar.

General Meeting will be at 7:30PM, details on back page. Guests are always welcome. Board meeting at 6:15PM



Aug 16 (Sat) Ice Cream Social at 3PM hosted by Ed & Patty Coté.

Bring your own hot dogs to BBQ. More info on Page 8.

Aug 23 (Sat) Technical Seminar "Lead-Free Solder" ~ 8am at Pete & Trish Cruz's home, 2715 E Brookside Ave, Orange. Coffee & donuts will be



served.



Aug 28 (Thu) Fourth Thursday Breakfast Brunch ~ at 8:30am. Jagerhaus German Restaurant, 2525 E Ball Rd, Anaheim 92805. For info contact Terry Collings (714)970-7194

Aug 30 (Sat) Labour of Love Music Fest ~ free family event at north end of Bolsa Chica State Beach, 11AM-5PM. For info call Jerry Neat at 562-884-5013



orange

Sep 6 (Sat) First Saturday Breakfast BS Session ~ 8AM at The Katella Grill, 1325 W Katella Ave, Or-



Sep 11 (Thu) General Meeting at 7:30PM, details on back page. Guests are always

welcome. Board meeting at 6:15PM



Sep 13 (Sat) International Model A Ford Day Picnic, Mason Regional Park, Irvine. See

Page 4 for more info.

Oct 15 (Wed) 22nd Annual Frasier Park Potluck, & Meet hosted by the Bakersfield Model A Club. Info contact Paula Poole at 661-333-4990

Oct 26 (Sun) Wings, Wheels & Rotors, Los Alamitos Airfield, 11200 Lexington Dr, Los Alamitos, 9a-4p, Info call: 562-598-6659 or 562-598-7035



Dec 14 (Sun) Installation Banquet, Angelo's & Vinci's, 550 N Harbor Blvd, Fullerton.

More details to follow.

August General Meeting will be a Potluck (6:30PM)

Bring your favorite dish
A-M Bring salad or dessert
N-Z Bring main dish
Please bring your own utensils and drinks

The regular General Meeting will follow at 7:30PM

Swap Meets

Aug 3 (Sun) - Long Beach Veteran's Stadium, 5000 Lew Davis, Long Beach 90808

Aug 24 (Sun) - 49th Annual Parts Exchange, 6AM-noon, 21000 Plummer, Chatsworth. For info contact Charlie Lohr at 818-288-3673

Sep 14 (Sun) - Long Beach Veteran's Stadium, 5000 Lew Davis, Long Beach 90808

Sep 20 (Sat) MAFFI Museum Model A Swap Meet in conjunction with Model A Day

**INTERNATIONAL MODEL A FORD DAY EVENT
CO-HOSTED BY SCRG & OCMAFC
SATURDAY, 9/13/2014 10AM -**



**MASON REGIONAL PARK
IRVINE, CA**

**\$5/CAR PARK ENTRANCE FEE
\$12 REGISTRATION FEE**

WITAM CIE

WELKOM

ALOHA

WILLKOMMEN

VELKOMMEN

BENVENUTO



WELCOME



TERVETULOA

**For registration information
and directions, go to
www.ocmafc.org**

2014 BOARD MEMBERS

President – Rick Hall
714-282-0499/rickandlouis@socal.rr.com
VP/Activities – Frank Mowrer
949-581-7621/frank25t@hotmail.com
Secretary – Pam Heiland
714-417-3111/colapam@sbcglobal.net
Treasurer – Joe Goff
949-768-4627/joe@abt-tax.com
Technical – Pete Cruz
949-246-1291/petecruz@gmail.com
Editor – Tissy Smith-Hatcher
714-546-8554/tismith@cookseylaw.com
Immediate Past President – Richard Parish, 714-999-0611/rcp1937@aol.com

COMMITTEES

ACCC Representative – TBA
Breakfast Committee – Terry Collings
714-970-7194/mtcollings@sbcglobal.net
Club Greeter – Doris Marshall
310-378-5061/dandd51@gmail.com
Election Chairperson – Position Available
Historian & Librarian – Dick Smith
949-770-6847/modeladick@yahoo.com
Merchandise Director – Cathy O'Brien
714-777-0771/yjgsrden@aol.com
Pancake Breakfast Setup & Coordination –
Frank Reese, 714-970-6262/Rfrust34@
yahoo.com and Mark Schwing, 714-970-
1696/mschwing@earthlink.net
Raffle – Ed Cote
714-542-6161/patricia.cote@att.net
Refreshments – Esther Goff
949-768-4627 and Carolyn Ratzlaff
714-529-5062, dcrazty@gmail.com
Regional Representative, SCRQ -
Carolyn Ratzlaff, 714-529-5062,
dcrazty@gmail.com
Sunshine & Sorrow – Marilyn Hawkins
714-730-4026/jmsinger@pacbell.net
Web Master – Chris Enright
949-481-8780/webmaster@ocmafc.com
Website Info Entry – Pete Hyland
714-633-5797/prhyland@att.net



Ronald McDonald House Charities is a home away from home for parents of hospitalized children.

OCMAFC supports the Ronald McDonald House with contributions of hygiene articles such as soap, shampoo, toothpaste etc. Please remember to save these articles as you travel throughout the year and place them in labeled container at club meetings.

Thank you for your support.

ROSTER DRAWING

The August meeting promises to be a windfall (hopefully) for some lucky member. Did you know you could cruise from New York to San Francisco via Panama for a mere \$120 in 1930?



COME TO THE AUGUST MEETING TO WIN \$150.

We have watered this money tree long enough.

You know the rule — Must Be Present To Win!!

Historian's Corner

By: Dick Smith
Club Historian/Librarian

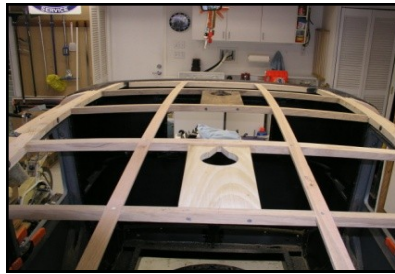


This month we will look at “Elliot” a beautiful example of a totally restored 1929 model 60C Steel Back Briggs bodied Fordor. The 60C is also referred to as a 2 window Blind back. The 60A & B's Leather-backs top differs, there top continued to the beltline under the rear window. From the rear, this steel back appears as any Fordor, yet the side view shows that the leatherette top stops at the rear of the back door, then curves to the rear giving it a very distinctive one of a kind appearance.

A letter, #31 from The Ford Motor Company to its Ford Dealers, dated Nov 1st 1929 shows the Net to Dealer cost of \$495, plus \$12.38 for bumpers, plus \$36.25 Freight, plus \$2.60 Gas & Oil. Total Dealer Cost = \$546.23. **The delivered cost to the customer, \$690.00** plus any optional accessories. Production, of the 60C was around 16,000 which is a very low production number.

“Elliot” is owned and was restored by Lew and Joan Lewis, long time South Orange County past club members that moved to Missouri. They purchased this car from Chicago and named it Elliot, after Eliot Ness. Lew spells Elliot with 2 L's although the “G” man spelled his name with one.

Lew had his mind set on restoring a high quality, low production Model A. His workmanship and use of NOS if available, or the best reproduction parts is clearly evident in this photo showing the “Ford Wood” kit. On reassembly every wood component of the body frame was glued and screwed for maximum rigidity and stability. The traditional was replaced and sealed with insulation. The car has all original metric repairs. Prior to assembly, and side covers were painted with stalled all new safety glass and winter-tempered glass wind wings with gine was totally restored by Larry positive ground alternator. The differential was rebuilt by Tom Endy. Tom also modified the differential to accept the Mitchell Model 1000,



chicken wire mesh and cotton pad wood sheathing, roofing paper and sheet metal requiring only minor cos-undersides of fenders, running boards “Chip-Guard” undercoating. Lew in-dow felts. Custom hand engraved, pinch-on rear view mirrors. The en-Reed Restoration. Lew uses a 6 VDC, transmission and tower, plus the dif-



26% Overdrive. A complete list of special assembly features is available. (Note) This car is currently looking for a new home, \$16,500 FOB. Saddle-brooke, Missouri. For more info on this car, contact Lew Lewis e-mail (hglewis@centurylink.net).

See you down the road.

Dick Smith, Club Historian/Librarian (modeladick@yahoo.com).

Question - If your Model A could travel at the speed of light, would your headlights work? Hmmm.



New/Returning/Changes to Roster

Bob & Marcia Allan, 116 S Leandro St, Anaheim, CA 92807; Hm: 714-921-9904; Cell: 714-319-1252; email: gr8techr360@gmail.com; 1930 Model 45A Standard Coupe

Lead is Dead . . . Or is it?

By Pete Cruz
Technical Director

Due to the issues I've had with the different Model A's I've owned and the hundreds I've looked at, I've started to naturally let my gaze drift to the trim edges around the fender wells. Even some of the nicer cars I've seen have issues in this area because it is such a difficult area to detail.

Rick Hall mentioned to me that he uses a small flat piece of metal as a "dolly" that he inserts into the gap between the trim edge and the rod that is held in place by the sheet metal that wraps around it. The problem is that oft times the trim edge has been damaged and needs to be built up to restore the proper line. Using body filler in this area is tricky because it is not robust enough to replace the steel especially when thinned out by sanding.

So, what can you do if you are struggling with the edges? The best methods are often the oldest and in this case that means "lead". Back in the day when customizers were using led to "French" headlights and taillights and make other wild modifications the material was plain old lead and it was toxic! Luckily the "lead" used today isn't lead at all but a "lead free" solder.

Like many techniques using lead free solder is a simple process. Naturally it takes some practice and certainly some patience to get it right. That being said let's take a look at the steps involved.

Prep the metal in the same way you would if you were going to add plastic filler.

"Tin" the surface using tinning butter which is essentially the same as using flux when soldering. This will help the material stick to the surface.

Use a torch to (a propane torch works just fine) to heat the tinning butter until it turns a "silvery" color then wipe it to spread it around the area you are going to be working.

Use the torch directly on the solder until it starts to melt. Once the solder starts to melt "dab" it onto the area you are working on. At this point you won't need to worry about shaping just get make sure you are getting enough material on the area to completely fill the depression.

Once you've got enough material onto the surface you'll use a wooden "paddle" specifically designed for this type of work to flatten and shape the material.

Using the torch heat the solder on a small working area.

Push the material as you work it into shape using the wooden paddle

Use paddle lube to keep the solder from sticking to the paddle

After you're satisfied with the basic shape you can file the solder to get it closer to the final shape you need. Special files are available for this purpose as well.

The REALLY GOOD news about lead-free solder is that once you have filed the material close you can grind or sand it! The old lead was extremely toxic and was dangerous when airborne. While the toxicity isn't an issue you'll still want to wear a mask with the lead-free solder just to keep airborne particulates out of your lungs.

After grinding you'll probably still want to throw a coat of "mud" on the repair just to get it really smooth and ready for paint.

One other advantage to "lead" is that it is very flexible even when thinned out. It doesn't take a whole bunch of vibration to produce cracks in plastic fillers especially in high stress areas.

So while plastic filler is CLEARLY the filler of choice for most applications, when you need something that will resist cracking and can be used to build up edges, give lead-free solder a shot!

If you want to see this process "in the flesh", make sure to attend this month's Technical Seminar on Saturday August 23rd!

FOR SALE: Are you interested in a fully restored, very sound and reliable, 1929 sedan? Elliot is for sale. Inquiries welcome. Richard Parrish has a disk with the full details of the vehicle. Many, many fully restored major components are all available with the vehicle. Contact Lew Lewis at hglewis@centurylink.net



Do you collect the MAFCA Restorer magazines? If so, I have many copies from the mid-70's too current, that was donated by our members to be shared with our Orange County Model A members at no cost. Just contact me with your issues desired. I also have older issues at a minimal cost from some members. Contact: Dick Smith, club historian at modeladick@yahoo.com or call 949-770-6847.

FOR SALE: I have two licenses available:

YOM Plate-CA-1929 (6"H X 14W)
Original (YOM Cleared)-Not Restored
\$225 plus shipping

YOM Plate-CA-1915 (6"H X 16W)
Original (YOM Cleared)-Not Restored
Original steel, porcelain plates
(note: porcelain plates are not restorable)
\$340 postage paid



Contact: Lew Lewis (hglewis@centurylink.net)



ICE CREAM SOCIAL/BBQ
Ed & Patty Coté have invited members to their home, 2435 Bonnie Brae, Santa Ana, at 3pm on August 16th. Bring your own hot dogs to BBQ. Please email Don Ratzlaff and Patty Coté so they know the attendance (helps with purchase of ice cream and fixings).

This page left blank intentionally

ORANGE COUNTY
MODEL A FORD
CLUB

Post Office Box 10595
Santa Ana, CA 92711

E-mail: info@ocmafc.org

Next General Meeting

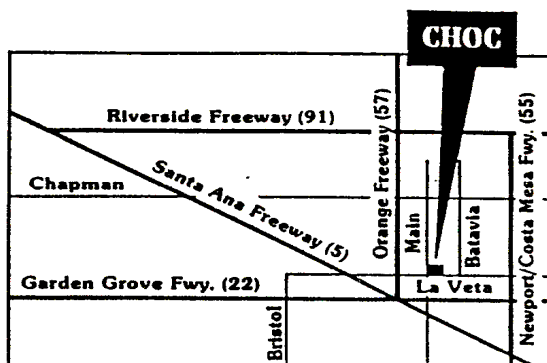
7:30 PM

[Second Thursday of every month]

August 14, 2014

CHOC Hospital Complex

455 South Main Street, Orange, CA



From Main Street, turn east on to Providence Ave. and immediately on your right, enter the structure and park on the second level. Meetings are held in Building 2 in the Wade Education Center-2nd Floor. Access meeting room through the double door entry off the 2nd Floor parking structure

We are on the Web!
www.ocmafc.org



Return Address:
Post Office Box 10595
Santa Ana, CA 92711

First Class Mail